

The ECHO

The Newsletter of the Randolph Civic Association

Volume 56, Issue 6

April 2013

RCA-Land Parking Solutions

By Matt Tifford, Chair

Alongside noise complaints (discussed in the March issue), the RCA frequently deals with parking questions and complaints. This month, I will discuss some of the more common parking issues that arise in our community. Please bear in mind that the rules and regulations I will be discussing are governed and enforced by Montgomery County. The Randolph Civic Association does not have the power to make or enforce any laws or regulations. Civic Associations like ours often get confused with HOA's (Home Owner Associations), which generally do have the power to create and enforce regulations above and beyond those enacted by county agencies. As a Civic Association,

our primary role is to educate and provide assistance when needed.

Most of our homes have room to accommodate three standard size vehicles, one in the driveway and two in the street in front of the house. Obvious exceptions are corner houses and homes that have added additional driveway space. However, many residents for various reasons have more than three vehicles, and when there are multiple homes each with four or more vehicles on the same block, problems frequently arise.

General On-Street Parking

We begin with the parking issue that causes the most friction in our community: one neighbor parking their vehicle in front of another neighbor's house. All street parking

in our community is public, meaning that anyone can park in front of your house provided that the vehicle is licensed and operational. However, public parking in front of homes is not without limitations. While you may park in front of your own home for as long as you like, you cannot park a vehicle in front of someone else's house for more than 24 hours. After that point, the county considers the vehicle abandoned and the homeowner can have your vehicle towed to the county impound lot. In order to avoid unnecessary conflict, the RCA



(Continued on page 8)

Upcoming Events

RCA General Membership Meeting

April 4th, 2013 8:00pm-9:30pm, Veirs Mill Recreation Center

Guest Speaker: Montgomery County Sierra Club presentation on energy savings;

Special Event: Executive Board Elections and Budget Approval

RCF Stream Clean-up

April 6th, 2013 9:00am-Noon, Rally at the Randolph Hills Shopping Center

RCA Executive Committee and Committee Chairs for 2012-2013

OFFICERS

President
Chad Salganik
4818 Mori Drive
301-275-2874
chad@randolphcivic.org

Vice President
Amber Tedesco
12114 Otis Drive
301-641-2946

2nd Vice President
Christiana Drapkin
11813 Ashley Drive
chdrapkin@aol.com

Secretary
Jason Ott
12202 Gaynor Road
301-230-2179

Treasurer
Nick Kriesle
4302 Star Lane
301-770-0119

Directors

Matthew Tifford
11235 Ashley Drive
matt.tifford@randolphcivic.org

Brian Hooker
5003 Macon Drive
brian.r.hooker@gmail.com

Mara Greengrass
safety@randolphcivic.org

COMMITTEE CHAIRS AND POINTS OF CONTACT

Echo Editor
Mark Nensel
11830 Rocking Horse Rd
301-351-1957
marknensel@gmail.com

Echo Production
Dan Hoffman
4602 Wilwyn Way
301-938-7494

Echo Advertising
For more info contact
echo@randolphcivic.org

Communications Committee
(Primary Contact for Media Requests)
Dan Hoffman
4602 Wilwyn Way
301-938-7494

Membership and Welcome Committee
Cindy Zelaya
5018 Macon Road
301-984-1006

Environment and Services Committee
Matthew Tifford
11235 Ashley Drive
301-770-4377

Education Committee
Amber Tedesco
12114 Otis Drive
301-641-2946

Yard Sale Signs
Lorena Moyer
4802 Macon Road
301-984-8727

Webmaster
Chad Salganik
4818 Mori Drive
202-359-6158

Public Safety Committee
Mara Greengrass
For more info contact
safety@randolphcivic.org

External Affairs Committee
Dan Hoffman
4602 Wilwyn Way
301-938-7494

Ways and Means
Nick Kriesle
4302 Star Lane
301-770-0119

President's Message

by Chad Salganik, RCA President

In the last President's Message I bemoaned the lack of snow in RCA-Land. Well, as I write this, it is the eve of a snowstorm that could bring 10 inches of snow. It's as good a time as any to remind ourselves to check on our neighbors who may need help if we receive a lot of snow in the wintertime, or if the power goes out at any time during the year.

In White Flint development news, it appears that the developer Archstone is no longer planning on developing the property across from Harris Teeter. They had planned on developing a 250 unit residential building. The property owner is looking for a new developer.

We have a great speaker lined up for the Randolph Civic Association April General Meeting. The Montgomery County Sierra Club will give an energy savings presentation. You'll leave with ten energy saving tips and information on incentive programs that can set you on course to reduce your electric and gas bills by 30%. Sounds good to me.

We often hear complaints along the lines of "instead of the RCA worrying about 'that issue', why doesn't the RCA do something about 'the issue that is important to me'?" The fact is, we are an association made up of volunteers, and those who are active in the association do what they can to make our neighborhood a better place. We are all interested in ideas that will help improve our community, but our ability to carry them out is limited by how many volunteers we have willing to help implement them. When you read about an RCA venture in the Echo, realize that this was initially proposed by a volunteer, who was then willing to spearhead the effort and try their best to see their proposal through to the end. If you have an idea or a request for the RCA, please consider coming to a meeting to discuss with your neighbors. We will be discussing neighborhood priorities at our April meeting. This is a great opportunity to bring any ideas/issues you have. See you there. Bring your ideas and I will bring the chocolate chip cookies.

RCA Telephone Number: (240)668-4722.

Recorded announcements of community events, 24 hours a day. Callers may leave messages.

Membership in the RCA is \$10.00 per year.

The Echo is the official publication of the Randolph Civic Association, Inc., P.O. Box 2202, North Bethesda, Maryland 20852. The Echo is published 8 times a year and distributed free to all residents of Franklin Park, Hilltop Square, Montrose Park, Randolph Hills, and Randolph Farms. Deadline for submission of articles varies; the next deadline is noted in each issue. If you would like to send an article in for consideration, please email the article to info@randolphcivic.org.

The Randolph Civic Association was formed in 1955 and incorporated in 1958. As stated in the original Articles of Incorporation, the purposes of the RCA are "to stimulate interest in all community problems and improvements that will better the general welfare of the community [and] to pay strict attention to any attempt to lessen the value of property within its borders..."

Web site: www.randolphcivic.org

Helping Randolph Area Sellers

Randolph Hills, Randolph Farms, Franklin Park, and Montrose Park Sales

April 2013 Update (No new sales as of this update.)

Last 10 Randolph Civic Area Home Sales

| Status | Address | Beds | Baths | Listed | Sold | Sold Date | Seller Help |
|--------|------------------|------|-------|-----------|-----------|------------|-------------|
| Sold | 4905 Randolph Rd | 3 | 2 | \$389,900 | \$389,000 | 1/4/2013 | \$0 |
| Sold | 4802 Oxbow Rd | 3 | 1 | \$265,000 | \$270,000 | 12/21/2012 | \$0 |
| Sold | 11808 Timber Ln | 3 | 2 | \$359,900 | \$359,900 | 12/14/2012 | \$12,500 |
| Sold | 4813 Wilwyn Way | 3 | 2 | \$365,000 | \$365,000 | 12/13/2012 | \$5,000 |
| Sold | 11401 Ashley Dr | 3 | 2 | \$414,900 | \$400,000 | 11/17/2012 | \$0 |
| Sold | 11009 Troy Rd | 3 | 1.5 | \$339,000 | \$327,500 | 11/12/2012 | \$0 |
| Sold | 4806 Wyaconda Rd | 3 | 2 | \$374,900 | \$375,000 | 11/8/2012 | \$2,500 |
| Sold | 12106 Otis Dr | 3 | 2 | \$300,000 | \$312,500 | 11/6/2012 | \$0 |
| Sold | 4813 Mori Dr | 3 | 2 | \$424,900 | \$404,000 | 11/5/2012 | \$1,500 |
| Sold | 12128 Gaynor Rd | 4 | 2 | \$439,900 | \$439,900 | 11/1/2012 | \$5,000 |

New On The Market (April 2013)

4802 Oxbow Rd

3BR 2.5BA

List Price: \$419,000

Outstanding Renovation



This home sold in 7 days. We received 5 offers. Through negotiating I was able to get the price up from our initial offer of \$250,000 up to \$270,000, \$5,000 over list price. The sellers were thrilled.

In April this home will be all new back on the market. It will be a complete renovation top to bottom. A new master bathroom was added. It has all new systems, a new roof, new kitchen and bathrooms.

It will really be great. Call me to see it in April.

I am happy to talk with you about your home sale.

(240) 497-0408

Chris Mann • Broker/Owner • Chris Mann Real Estate Co. • Randolph Resident Since 2001

Considering a short sale? I am an expert. I am happy to answer your questions.

Neighborhood News in Brief

- **Slate of candidates for 2013-2104 RCA year approved by RCA Board and will be voted on by membership at April meeting.** All current board members are eligible to run for their seats again with the exception of Treasurer Nicholas Kriesle and Director Brian Hooker. The rest of the Board is eligible to run again for their current seat. The seats for Directors Tifford and Greengrass are not up in this cycle. The slate is:
 - President: Chad Salganik
 - Vice President One: Amber Tedesco
 - Vice President Two: Brian Hooker
 - Treasurer: Dan Hoffman
 - Secretary: Jason Ott
 - Director: Mark Nensel
- **The RCF is planning a Stream Clean-up Day on Saturday, April 6 from 9 am to 12 noon.** This will be done in conjunction with the local Boy Scouts. We have a lot of litter in our streams and throughout our neighborhood so please lend a hand. We will meet in the parking lot of Randolph Hills Shopping Center at 9:00am. Supplies such as gloves and bags will be provided. The full trash bags will be picked up by the county the following day or soon after. It is important that you let the RCF know where you intend to place the garbage bags so that we can inform the county on the pick-up.

The RCA Hotline

240-668-4722 (4RCA)

Calls Received January 23rd, 2013 through March 4th, 2013

General Note: The RCA gets a lot of calls about code violations (untagged cars, tall grass, etc). Please note that phone numbers for agencies that handle such matters are published on the website. You don't have to leave your name or phone number. The RCA reserves the right to not publish calls longer than 1.5 minutes due to the time it takes to transcribe and cost to publish. You can always email the RCA at info@randolphcivic.org or submit an article for publication to the Echo editor.

No hotline calls since the last Echo. We do monitor the hotline, info@randolphcivic.org and respond when warranted, so please continue to contact us with questions and concerns.

Note to Echo Contributors:

Deadlines for the remainder of the 2012-2013 Issue year are:

May 2013 April 12th

June/July/Aug 2013 May 24th



SILAT MARTIAL ARTS ACADEMY

Discover the ancient fighting art of Indonesia



SPACE IS LIMITED.
REGISTER TODAY!

WWW.SILATMA.COM/SPECIALS

www.silatma.com
info@silatma.com
301-825-5540

4935 Wyaconda Rd. Rockville, MD 20852

March Executive Board Meeting Minutes

by Jason Ott

1. Call to order: 8:00 PM
2. Old Business
 - Membership in RCA for last year finished at 413 households, which is 13 more than last year. The Welcome Wagon is greeting new homeowners about once per quarter. For future years, there will be a focus on calling residents during the membership drive. Also, the duties of organizing the efforts will be given to a board member.
 - RCA Music Fest will be May 19th, from 4 P.M. to 6 P.M. Adults seeking a fun event and well-behaved children are invited.
3. Standard Business
 - The Board approved a slate of candidates for the upcoming elections. Elections will be held on April 4th, 2013, at the General Membership Meeting. The approved slate is on page four of this issue.
 - The Montgomery County Department of Transportation will be making permanent the traffic improvements on Boiling Brook Parkway when turning left from Rocking Horse. These are currently marked with paint. There were plastic barriers that were being knocked over. RCA has stated our approval to having this safety improvement made permanent. We have also expressed our desire to have the safety area be configured to allow the turn to be passable by trucks with trailers and by buses.
 - There is a home on Rocking Horse that just recently was littered with items from the home. The items are in the front yard and creating a mess. Also, there is a POD located out front on the street. RCA will take a picture and forward to county representatives to try to get the issue improved.
 - There was a concern expressed on the listserv regarding a daycare provider at Viers Mill ES.
4. New Business
 - The minutes from the February 7th, 2013, meeting were approved as presented.
 - The Treasurer's Report was not presented. However, it was discussed that the Treasurer is working to resolve an issue with the IRS related to getting RCA in good standing again. We hope to have the matter resolved within the month.
 - Safety Committee Report: There were no current safety concerns. There is a resident interested in joining the Neighborhood Watch.
 - Schools Committee Report: Viers Mill ES construction is nearing completion. Teachers will move in shortly after spring break. The portables will be away near the end of the year.
 - Environment Committee Report: There was a call regarding a home with many items in the yard. This can be reported to housing.
5. RCA Meeting was adjourned at 8:45 P.M.

Effects of the Sequester on RCA-Land

by Mark Nensel

On March 1, 2013, the "Sequester" – the first in a series of automatic across-the-board cuts to federal government spending, which will ultimately total \$1.2 trillion over the course of ten years - took effect. As of press time, no further plans to alter the sequester details have been implemented. Will these budget cuts affect us here in RCA-Land? Considering the fact that we are a near-in suburb of Washington, DC, and many of us in our neighborhood are federal government employees, or work for companies or services that directly work with, or relate to, the federal government, it is fair to say that we will most-assuredly be affected by it in the coming months.

The Sequester is a white-hot political and societal issue. It is acknowledged by nearly everybody in this country that our national spending, deficit and debt are severely off-track. We arrived at this place for a variety of reasons, all of which have been thoroughly discussed in our news media -- and at our dinner tables -- for years now. The wisdom and method of the Sequester is arbitrary. It has engendered widespread consternation amongst a vast array of interest groups and government leaders and workers who do not want to see this or that government-supplied service, research or program diminished. Others, however, see the Sequester as the painful but necessary step to actually force the government to control its spending, minus any additional revenue. The Sequester brings the moment when the bitter pill of severe cuts to federal government spending is at last implemented. It is the beginning of an age of austerity.

The events came to be as part of the Budget Control Act of 2011, 18 months ago, following the debt ceiling compromise. The threat of sequestration was intended to convince the Joint Select Committee on Deficit Reduction (aka the 'Supercommittee') to agree on a \$1.5 trillion budget comprised of spending cuts and revenue increases over the coming decade. The Fiscal Cliff standoff at the end of 2012 ended with the Congressional passage of the American Taxpayer Relief Act on January 2, 2013 – but the deadline for the mandatory budget cuts – the sequestration – was postponed to March 1, 2013. When Congress was unable to agree on a federal budget that would reduce the federal deficit, \$85 billion in spending cuts went into effect.

For Fiscal Year 2013 (up through September 30, 2013), the sequestration requires a 7.8 percent reduction in non-exempt defense discretionary funding and a 5.0 percent reduction in non-exempt nondefense discretionary funding. The sequestration also requires reductions of 2.0 percent to Medicare, 5.1 percent to other non-exempt nondefense mandatory programs, and 7.9 percent to non-exempt defense mandatory programs.

(Continued on page 6)

Sequester

(continued from page 5)

(Source: U.S. Office of Management and Budget).

Will it go on? Will it be curtailed? We will have to wait and see. In the meantime, we must all tighten our belts and hold on. It could be a very bumpy ride. What follows are some possible effects the Sequestration may have on the residents of RCA-Land.

From a joint news release on 2/19/13 by Montgomery County Executive Isiah Leggett, Prince Georges County Executive Rushern Baker and Howard County Executive Ken Ulman: "Maryland has 852,000 students who would be impacted by the sequestration. Maryland receives \$196 million from the federal government to provide support for low-income students (Title I Grants), \$200 million to support the needs of special education students and \$90 million for Head Start in Maryland. The sequestration could result in a five percent cut in this funding that would affect 11,728 low-income students at 30 schools across the state; lead to 198 layoffs of school employees, including teachers; layoff 100 special education teachers; cut services for 550 Head Start kids; and cause 164 Head Start teachers to lose their jobs ... Maryland has 130,000 federal workers whose salaries could be cut 20 percent due to furloughs. In fiscal year 2012, Montgomery County alone had \$5 billion in prime federal contracting awards that would be adversely affected. 'Montgomery County has 47,000 federal workers and thousands of businesses that contract with the federal government – all of whom will be directly affected', [said Ike Leggett]."

From the National Council on Disability (NCD): "Medicare: While other non-defense programs are facing an 8.4 percent cut, Medicare cuts are limited to 2 percent per fiscal year. The Congressional Budget Office (CBO) estimates that in 2013 a 2 percent cut totals \$123 billion.

Social Security: Disability benefits will remain intact, but across-the-board budget cuts would force the SSA to 'curtail service to the public,' according to the White House. Social Security Commissioner Michael J. Astrue wrote on Feb. 7 that administrative cuts could slow disability claims, 'If we do not have enough staff to keep up or if furloughs prevent them from working, the public can expect to wait longer in our offices, on the phone, and for disability decisions at all levels.' Pending levels of initial disability claims are likely to rise by over 140,000 claims, and it is estimated that applicants will have to wait about two weeks longer for decision on disability claims and nearly a month longer for disability hearing decisions.

Housing: \$1.9 billion in cuts to housing assistance for an estimated 125,000 Americans, including assistance for elderly and people with disabilities, as part of the Housing Choice Voucher (HCV) program would be lost – increasing the

(Continued on page 10)

COMING TO strathmore

In the Music Center

DRUMLINE LIVE!

FRI, MAR 1, 8PM



CIRQUE ZIVA

THU, MAR 7, 8PM



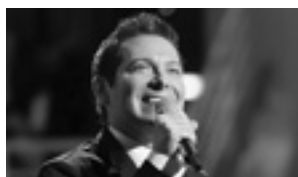
NEIL BERG'S 101 YEARS OF BROADWAY

SUN, MAR 24, 7PM



VOCA PEOPLE

THU, APR 18, 8PM



2013 SPRING GALA
AT STRATHMORE
**MICHAEL FEINSTEIN:
THE GERSHWINS
AND ME**
SAT, APR 20, 9PM

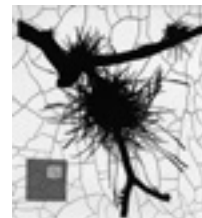
Fine Art in the Mansion

PULSE: ART AND MEDICINE

THROUGH APR 13



Satre Stuelke, Dog Toy (CT Scan)



DRAWING FOR ART APR 18-28

Join us for a drawing on April 28, where every ticket holder leaves with a work of art! Proceeds support Strathmore Fine Art programs.

www.strathmore.org • (301) 581-5100

Strathmore Ticket Office

5301 Tuckerman Lane, North Bethesda, MD

Groups Save! (301) 581-5199


STRATHMORE®

Loehmann's Plaza
5200-5290 Randolph Road
Rockville, MD 20852



| | |
|----------------------|----------------|
| Boston Market | (301) 984-0990 |
| Chuck E Cheese | (301) 468-2491 |
| Congressional Bank | (301) 984-6000 |
| Dollar Tree | (301) 231-6097 |
| El Patio | (301) 231-9225 |
| Hair Systems | (301) 770-0358 |
| Lifestyle Spa | (301) 468-9770 |
| Loehmann's | (301) 770-0030 |
| Parcel Plus | (301) 468-2177 |
| Royal Martial Arts | (301) 770-1007 |
| Safeway, Store #1315 | (301) 770-3665 |
| Sherwin-Williams | (301) 984-7124 |
| Subway | (301) 881-4672 |
| Vision Cleaners | (301) 881-7142 |
| West Marine Store | (301) 230-0945 |

Parking in RCA-Land (continued from page 1)

recommends that residents do their best to avoid parking in front of neighbors' homes, and at the same time show tolerance to short-term visitors.

Also, please note that vehicles parked on public roads are required to park facing the correct way in order to merge appropriately with the flow of traffic when pulling out onto the street. A number of years ago a police officer went through the community ticketing every vehicle parked the wrong way. This doesn't happen very often, but it's definitely something to keep in mind!

Parking on your property and inoperable or unregistered vehicles

It is commonly believed that it is permitted to keep inoperable and unlicensed vehicles in the driveway or backyard as long as they are not on the street. This is not the case. All cars parked on the street or on your property must be operable and have current tags. Another common belief is that it is permitted to park on the lawn. The county requires that all vehicles be parked on a surfaced area, defined as asphalt, concrete, paving stones, gravel, or other permeable paving products.

Public Sidewalks

It is not permitted to block the public sidewalks, except during construction with a permit from the Department of Permitting Services. This regulation poses a problem for many residents who live on busy cut-through streets like Schuykill and Rocking Horse. Heavy traffic, often moving at excessive speeds, results in increased risks to both parked vehicles and residents trying to get in and out. However, parking across the sidewalk also creates risks for pedestrians, particularly those with strollers or wheelchairs as they are often forced out into the street in order to get around the parked vehicle. The RCA encourages residents to find alternatives to these two scenarios. One obvious solution is to increase your driveway area to accommodate another vehicle. Alternatively, it is possible to increase the safety of your street by requesting traffic calming measures from the Montgomery County Department of Transportation. Curb bump-outs and striping for parking areas can create a safer environment for on-street parking. If you are interested in pursuing this kind of project, feel free to contact me at matt.tifford@randolphcivic.org.

Dumpsters and POD Storage

Absent a permit, dumpsters and other POD-type storage containers can be kept in the driveway or yard (but not in the street or the county right-of-way) for up to seven days. Containers may be kept on the street, in the public right-of-way, or for longer periods with a permit from the Department of Permitting Services.

Trailers

Trailers, including those for boats and other recreational vehicles, cannot be parked on public streets. There are a few exceptions, detailed in this excerpt from Montgomery County website: "You can leave your un-

hitched trailer on a residential road in only a few circumstances. Trailers can be left on the street for up to 18 hours while they are being actively loaded or unloaded. A broken-down utility trailer can also be parked on the street for up to 48 hours."

Commercial Vehicles

We also get a lot of complaints regarding commercial vehicles. While it is true that some commercial vehicles are prohibited in residential neighborhoods, the county is very specific about the size of the vehicle. Just because someone has a van with a logo on the side doesn't mean that it is prohibited. In residential neighborhoods, the county prohibits both on and off-street parking of "heavy commercial vehicles" which are defined as follows: "a gross vehicle weight of more than 10,000 pounds; a manufacturer's rated capacity of more than one ton; more than 21 feet long (including any object loaded onto the vehicle); or are more than eight feet high (including racks, but not antennas)."

Enforcement

Generally, enforcement is by complaint, although as mentioned above it certainly is possible for random enforcement to occur. If you have a complaint, the Montgomery County website instructs as follows: "Paving of front yards and off-street parking issues are the responsibility of the Department of Permitting Services. Unregistered and inoperable vehicle issues are handled by the Department of Housing and Community Affairs. On-street parking complaints fall to the Police Department."

The Department of Permitting Services and the Department of Housing and Community Affairs can both be reached by dialing 311, or at www.montgomerycountymd.gov. To reach the Police Department, call the non-emergency number: 301-279-8000.



11 Things You Need To Know to Pass a Home Inspection

ROCKVILLE: Experts agree that there are over 33 physical problems that will come under scrutiny during a home inspection when your home is for sale. A **FREE REPORT** is available which identifies the most common of these problems, and what you should know about them before you list your home for sale.

Whether you own an old home or a brand new one, there are many things that can fall short of requirements during a home inspection. If not identified and dealt with, any of these items could cost you dearly in terms of repair. That's why it's critical that you read this report before you list your home.

If you wait until the building inspector flags these issues, you may experience costly delays in the close of your home sale or, worse, turn prospective buyers away altogether.

In most cases, you can make a reasonable pre-inspection yourself if you know what you're looking for. And knowing what you're looking for can help you prevent little problems from growing into costly and unmanageable ones.

To help home sellers before their homes are listed, a free report entitled, "**11 Things You Need to Know to Pass a Home Inspection**" has been compiled which explains the issues involved.

To order a FREE COPY of this report, call 1.800.638.0895 and enter ID#1006. You can call any time, 24 hours a day, 7 days a week. CALL NOW to learn how to ensure a home inspection doesn't cost you the sale of your house.

This report provided by Ken Abramowitz of Re/Max Realty Centre 301.774.5900 as a Public Service



Offers Expire 03/31/13

OUR LOCATION

4860 Boiling Brook Pkwy Rockville, MD 20852
(301) 468-0400 www.koshermart.com

STORE HOURS

Sunday 7:30 am – 9 pm Monday 7:30 am – 8 pm
Tuesday - Thurs 7:30 am – 9 pm Friday 7:00 am – 3 pm



Your Neighborhood Supermarket!

Produce, Groceries, and Everything You Need at a Price That You'll Love

Check Out These Low Prices on Everyday Items



Produce Specials

AVOCADOS
\$0.99 EA
TOMATOES
\$1.49 LB

Dairy Special!

CLOVERLAND MILK
GALLON
\$3.49 EA

Lowest Price in Town!



Beer Specials!

CORONA 12 PK
\$13.99 CASE
MILLER LITE 12PK
\$10.99 CASE

Grocery Special

SAUDER'S JUMBO
EGGS
\$1.79
1 Dozen Carton

Moti's Grill



Moti's Grill features sizzling steaks and kebabs, perfectly spiced schwarma, award winning falafel, homemade deli meats, and a unique selection of succulent Middle Eastern appetizers and dips.

Burger Night!
Every Monday 5 pm - 9 p m

All you can eat Indian Buffet!
Every Tuesday 5pm-9pm

Sushi Specials!
Every Wednesday 11am-9pm



4860 Boiling Brook Pkwy. Rockville, MD 20852 • 301-230-0839

Sunday thru Thursday 11 am - 9 pm • Friday 11 am - 3 pm • Closed on Shabbat and Jewish holidays

Sequester

(continued from page 6)

possibility of homelessness, according to testimony to the Senate by Secretary of Housing and Urban Development Shaun Donovan on February 14, 2013.

Education: \$978 million in comprehensive funding cuts would affect 30.7 million special education students. Funding for special education, specifically, would be slashed by nearly \$600 million, reducing supports for students with disabilities to 2005 levels. Federal funding for the Individuals with Disabilities Education Act (IDEA) will be reduced by 28 percent, totaling a loss of one billion dollars. Close to 15,000 special education teachers could lose their jobs resulting in larger class sizes. 70,000 children, many of them disabled, would be dropped from Head Start programs. Funding for 'up to 7,200' special education support workers - such as personnel aides and money for assistance - would also be eliminated, according to the White House.

Employment: Vocational rehabilitation stands to lose \$160 million leading to the reduction of services, increasing wait times for services and placing disabled job seekers in administrative limbo on waiting lists.

Veterans: Programs such as TRICARE, tuition assistance and family support programs are not exempt and fall under sequestration. There are no direct cuts to Veterans Administration health care programs under sequestration, but individuals forced to turn to the VA to

obtain care they normally receive under TRICARE could add increased burdens to the system."

From the Washington Post and from Federal agencies via the Senate Appropriations Committee: "The National Oceanic and Atmospheric Administration [headquartered in Silver Spring] would furlough up to 2,600 employees and leave 2,700 positions unfilled. The National Institute of Standards and Technology [headquartered in Gaithersburg] would eliminate 100 research associates. The Transportation Security Administration would furlough its 50,000 officers, initiate a hiring freeze and eliminate overtime [which will certainly affect everyone's experience at our local airports' security screenings, via increased processing delays]. Customs and Border Protection would have to reduce work hours by the equivalent of over 5,000 Border Patrol agents and the equivalent of over 2,750 CBP officers. CBP would 'implement an agency-wide furlough of up to fourteen (14) non-consecutive work days for each employee.' [This will affect international travelers returning to the U.S. via airline, cruise ship, or roadway border crossings, primarily inflicting increased processing delays]. The National Park Service would hire fewer seasonal workers, and some park areas would be closed to the public. [Call ahead or research any National Park sites nearby (i.e. Ft. McHenry, Antietam, Gettysburg, Shenandoah) that you may plan to visit - make certain they'll be open before you arrive!]. The budget cuts will take away the Small Business Administration's ability to

(Continued on page 14)

**BATHROOMS • KITCHENS • BASEMENT
RENOVATION • RESTORATION • REMODELING**



**ONE CALL WILL BRING
YOU A REMODELING PRO!**



240-838-0553
See Reviews on Angie's List
**BOOK YOUR
FREE
CONSULTATION TODAY!**

\$500⁰⁰ OFF
Complete Bathroom, Kitchen
or Basement Remodel
Restrictions May Apply
With this coupon
Cannot be combined with any other offers

Google Us for
Excellent Reviews

Licensed • Bonded • Insured
MHIC #88345 DCHIC # 5914

INFO@MODERNSTYLECONSTRUCTION.COM • WWW.MODERNSTYLE CONSTRUCTION.COM

Planning for Beautification in RCA-land

by Karen Helfert

It is a challenging prospect. We have six neighborhood signs (five from last year, plus one more coming this year) with a wide range of environments from full sun to full shade ... and all require deer resistant plants to the extent possible.

We wanted a mix of perennials (so we wouldn't need to replace each year, yet they tend to only bloom once a season) and annuals (great for color and blooms, but need to be replaced each year). We also wanted some plants which could provide some winter interest, such as grasses, evergreens, and plants with interesting structure when leaves fall away. And we wanted all of this while trying to minimize expenses.

With limited budget for all these areas, we bought smaller perennials and would wait for growth. We also bought small market pack annuals and re-potted them into 4-inch pots, watered with growth enhancers and nurtured in a make-shift "nursery area" on my driveway. (Hint: if you plant annuals/veggies, use the same process, move the poor plants which are jammed into those little 1 X 2 inch holes in those "market" packs. Planting these small plants directly into the ground is difficult for most plants. An interim planting in slightly larger pots, kept in a sheltered spot and then watered with something like "Quick Start", will result in much better/bigger plants for blooms or veggies).

The most difficult was the sign area at Boiling Brook in front of Charles E Smith School. This is a large bed area, full sun, no water available....except from rain and that which we would schlep in gallon jugs of water -- a heavy, messy job! So we looked for a mix of perennials that would survive in full sun, be drought tolerant, and deer resistant. We had some winners and a couple of losers. Annuals -- petunias and marigolds grew like gangbusters, in fact shading the little blue rug junipers so much so that the junipers did not survive. Perennials -- butterfly weed, sage and grasses -- did very well.

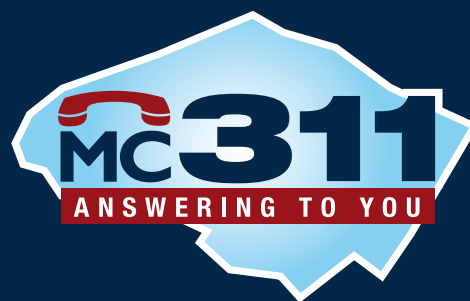
The signs on Randolph Road are mixed sun/shade areas and have the possibility of close neighbors occasionally being able to water these areas. So we had to find plants which did not require full sun or full shade. So petunias and marigolds were out, salvias (reds, whites and blues) would work. We also added some perennials such as liriopes (look like grasses on steroids with a white stripe). Come spring we will re-evaluate the status of the perennials.

The sign at Schuylkill is a full shade area and relatively dry. We tried dwarf azaleas which did not get watered by the volunteer we thought we had lined up; the azaleas died. We also have tried hellebores (lenten rose). They are evergreen, have a very long bloom

season - starting as early as February. We can add a few impatiens and the area should look good all season.

We now have a cooperative agreement with the CESDS's landscaper, we buy the annuals and they will plant and maintain the area. We will still have some perennials at either end to provide some diversity and variety. For the other sign areas, we're looking forward and will try to have colors which will coordinate with the colors at Boiling Brook and will survive and thrive in those sign areas. Schuylkill will only need some impatiens.

We welcome, we invite, and we ask for additional volunteers to help either all season or for our "planting" day. Contact me: khelfert1@comcast.net or Matt Tifford for more information.



Call 311 To Get It Done!

311 is Montgomery County's phone number for non-emergency government information and services. For emergency calls, residents should continue to call 911. A new website is available 24/7 at www.montgomerycountymd.gov/311.

Phone Numbers for MC311

- In Montgomery County, call 311
- Outside of Montgomery County, call 240-777-0311
- The TTY number is 240-773-3556

Reminder: Call 911 for emergencies

Website:

www.montgomerycountymd.gov/311

Troop 1083 News

By Ben Pitkin, Assistant Scoutmaster

The high point of the past month was the Eagle Scout Court of Honor held February 23rd to honor and celebrate Matthew Best's attainment of Scouting's highest and most prestigious rank. Over the past seven years, Matthew's journey through Scouting was assisted many times over by the efforts of the Troop 1083 extended family. Nevertheless, Matthew's own perseverance and unflagging Scout spirit led most directly to his achievement. The Court of Honor was as inspiring as it was memorable.

Troop meetings in February and March have focused on merit badges. About a dozen merit badge options were offered so the Scouts would be assured a topic of interest. Any scout with ambitions of reaching the Eagle rank must earn at least 21 merit badges, of which 12 must be from a specific "core curriculum." Many of this year's offerings are from the list of Eagle-required merit badges; others—such as Auto Repair and Engineering—are cool (and practical) electives.

The remainder of March and early April will keep the Troop 1083 Scouts and their families busy with service projects and fun outings such as the Webelos weekend campout, some high adventure practice hikes, a trip to the Rockville Aquatic Center, and a neighborhood stream and park cleanup.

If you are a boy who has finished the fifth grade you can join us. We meet Monday night at 7:30 at Viers Mill ES, or call Scoutmaster Dave Talbott at 301-933-0048. Check out the Troop's web page at www.troop1083.org.

Venture Crew 1083 News

By Ben Pitkin, Assistant Scoutmaster

On February 17, Venture Crew 1083—along with affiliated Girl Scout, Boy Scout, and Cub Scout units—went skiing and snowboarding at Ski Liberty in Pennsylvania. Conditions were just about perfect for winter sports—maybe a little too perfect. Five or six times before the sun went down, the weather changed dramatically from sunny skies to brief white-out blizzard conditions. The nighttime skiing/snowboarding provided more consistently clear skies. But one thing was constant all day and night: a nonstop steady wind blowing directly up the slopes. At times it felt as if the wind would bring you to a cold stop right in mid-slope if you stuck your arms out to catch the breeze! And I do mean "cold." But the cold also kept the snow in excellent skiing condition – no slush, and very few icy patches.

Beginning in March the Crew will feature three separate High Adventure units, each training for its own trip of a lifetime. Two of those units are on their way to Philmont Scout Ranch in New Mexico this summer, and the other will go to the Len'hoksin Reservation in Goshen Virginia in 2013 and 2014 before also heading to Philmont in 2015. Maybe we'll take

(Continued on Page 13)

News from Cub Scout Pack 1081

By Leora Hernandez

Pack 1081 is accepting boys from 1st grade to fifth grade into their pack. The boys enjoy learning all kinds of life skills and have experience a wide variety of activities such as camping, trips to museums, bowling, and skiing.

Winter 2013 has been full of fun times for Pack 1081! Webelos W. Metelko, L. O'Donnell, F. Ayala, and J. Hackenberg attended the Klondike Derby at Little Bennett where they enjoyed outdoor challenges and were dinner guests of Boy Scout Troop 1083.

The Pinewood Derby is always an exciting event for the cub scouts and their families. Participants included D. Payne, T. Setterson, T. Parker, J. Levy, C. Hackenberg, M. Ayala, W. Metelko, S. Hernandez, L. O'Donnell, J. Tallman, F. Ayala, J. Hackenberg, M. Charron. Plus, we had six parent/sibling racers as well.

Overall Winners: Pack fastest car 1st– E. Tallman (sibling); Pack fastest car 2nd– S. Hernandez (Web I); Pack fastest car 3rd– Tied between J. Tallman (Web I) and J. Hackenberg (Web II).

Scouts going to the Districts to represent their dens are: Tiger Den: D. Payne; Wolf Den: T. Setterson; Bear Den: Matthew Ayala; Webelos I: S. Hernandez; Webelos II: J. Hackenberg.

Ski Liberty attendees had to brave strong winds and a wind chill of 8 degrees, but all had a great time, including W. Metelko, J. Levy, J. Tallman, J. Hackenberg, F. Ayala, C. Hackenberg, M. Ayala, D. Payne, and J. Hotaling.

The Blue and Gold Banquet was held on February 21, 2013 - Cub Scout Pack 1081 celebrated its 50th Anniversary and 103 years of scouting with an international theme. Blue represents truth and loyalty, and Gold represents good cheer, happiness, and helping others.

The Pack meets Mondays at Viers Mill Elementary School during the school year starting at 6:30 pm. Boys in grades 1st - 5th are welcome to join. You can contact our Pack Master at rchackenberg@verizon.net



Cub Scouts Pinewood Derby

Randolph Civic Foundation News

Your Turn To Help –

Adopt a Sign Site

by Lindsay Hoffman, Randolph Civic Foundation President

The neighborhoods of RCA-Land are proud of our new entrance signs. We worked hard to raise the money for them, negotiate the permitting and site locations and we continue to maintain their landscaping. Here's where we could use a few extra hands. As the weather warms, we will be planting colorful annuals at each of our sign sites and we're hoping a handful of households will help by "adopting" the sign site nearest you. A few minutes a week – either weeding or watering – will keep our neighborhood entrances inviting and alleviate the burden on super-volunteer Karen Helfert, who typically maintains the sites herself. So, if you're available to join a group pitching in on the sign site nearest you, please email me at LindsayHoffman@aol.com. These signs have already enhanced our neighborhoods' identities. Let's work together to keep them up!

RCF Executive Committee for 2012-2013

OFFICERS

President

Lindsay Hoffman
4602 Wilwyn Way
301-775-9807

Vice President

Matt Tifford
11235 Ashley Drive
301-770-4377

Secretary

Bob Walker
11813 Ashley Drive
amorworks1@aol.com

Treasurer

Mark Nensel
11830 Rocking Horse Rd
301-351-1957

Directors

Mike Saunders
12107 Hunters Lane
301-468-9268

Karen Helfert
11429 Ashley Drive
301-468-0236

Alison Dewey
5003 Macon Drive
sabaly@hotmail.com

The Randolph Civic Foundation originated in 1996. It was formed to provide educational and charitable services to the Randolph Community. The address is: Randolph Civic Foundation, PO Box 489, Garrett Park, MD 20896-0489

www.RandolphCivicFoundation.org - Phone: 240-389-4723

Fellow Neighbor 20 Years

Leaf Removal • Grass Cutting • Tree Work
INSURED



Local Lawn Care
Etc.

OWNER (301) 770-5549 OPERATED

Girl Scout Troop 1079 - Cadettes

by Leora Hernandez

This troop is for girls in grades 6th-12th. At the Cadette troop level the girls will have opportunities to grow leadership skills, earn SSL hours, and have fun!

Our troop is interested in helping those in need in our community. If you are aware of an elderly person in the neighborhood who would benefit from having companionship and help with either yard work or household chores, please contact me below.

In January and February the girls focused on what types of service projects they were interested in doing and preparing for World Thinking Day. We celebrated World Thinking Day with our service unit at Blair High School. It is always a lot of fun. Our troop learned about Portugal and made lemon cookies called lavadores -- named for their "washboard" appearance -- to share. The cookies were a hit and not that hard to make. You can easily find the recipe on the web and try them for yourself. They would go great with tea or coffee.

We learned that Portugal is a wonderful place to experience many outdoor adventures including canoeing, beaches, bird watching, and hiking. The Portuguese 'Girl Guides' promise and law are very similar to ours in the US. But they differ in how they organize their troops by ages. Our Daisies and Brownies would be "little birds" in Portugal.

As we look forward to springtime we are planning to participate in a Cherry Blossom celebration, help with the watershed clean-up, and enjoy more activities that will widen our experiences.

Girls in 6th-12th grade interested in joining us? Contact Leora Hernandez at 240-593-9318 or leorah2o@yahoo.com for more information.

Venture Crew News

(continued from page 12)

some pictures to show you!

Check back next month and see what else the Crew 1083 has been up to. Venturing is open to coed youth aged 14 through 20. Crew meetings are every second Monday night, from 6:30-7:30 pm at Viers Mill ES. Why not join us? Bring a like-minded friend so you'll already know someone else at the meeting! For more information, contact crew advisor Greg Skolnik at 301-942-3755.

Save the Date!

RCF Annual Meeting and Spaghetti Dinner

May 2nd, 2013 - 6:00pm

Viers Mill Recreation Center

CLASSIFIEDS

The Echo publishes classified ads free for RCA members, to a maximum of one ad per year per household. Additional ads may be purchased for \$5.00. The Echo makes no claims or guarantees regarding the quality of goods or services sold.

WATERCOLOR CLASSES. Learn to paint in nearby Garrett Park! Small, informal classes for adults. All levels welcome, including complete beginners. Held in teacher's Victorian home. Martha Seigel, MFA, the American University, 31 years experience. Call 301-946-5388.

BEST BUDDIES PETSITTING SERVICE: Going out of town? Need your dog to be walked daily? Have a cat that needs to be boarded? Well we are a home away from home providing the best loving care for your pet depending on your needs. We board cats and dogs and we do not crate them. We have a fenced-in quarter acre lot right here in Randolph Hills! Dogs get two 30 minute walks daily and all animals get breakfast and dinner; we provide the food! Between walks, there is plenty of playtime. Prices reasonable and our schedule is setup to meet your needs. Pickup and drop-off service is provided if needed. Any medications can and will be administered. We are bonded and insured. Call Danny Beigel at: 240.654.0694 or go to www.bestbuddiespetservice.com email us at bestbuddiespetsitting@hotmail.com

Sequester

(continued from page 10)

make nearly 2,000 small business loans that would have supported 22,600 jobs in struggling industries. Business counseling centers nationwide will curtail hours and staff and serve fewer clients."

On the other hand, some items that will not be affected by the sequester include: members of Congress will not see their salaries cut; the 1.5 million active-duty members of the armed forces will not receive furlough notices or pay cuts; the U.S. Postal Service is exempt from the sequester.

According to Politico, other nearby agencies, like the nearby Nuclear Regulatory Commission "might see some belt-tightening, but their employees won't be furloughed". The Food and Drug Administration, "unlike other agencies in the [Department of Health and Human Services], will skip some travel and training to get around furloughing employees".

"Assistance to individuals with low-incomes and their families like Temporary Assistance for Needy Families (TANF, or welfare), the Supplemental Nutritional Assistance Program (SNAP, or food stamps), unemployment benefits and provider payments made through Medicare will not be cut, although staff time and resources are likely to be compromised," asserts the NCD.



KAREN WOOD
Piano Instruction
(301) 512-8883

*Accepting Piano
Students of All Levels*

*Music can aide —
Relaxation, Recreation,
Motivation, Celebration,
and Concentration*

Karen Wood has over 25 years of experience teaching piano to adults and children. She earned a Bachelor of Music with major in Piano and minor in Voice, and guides her students by standards of the National Guild of Piano Teachers.

► **SILPADA®**

STERLING SILVER JEWELRY

Stacy Rabinovitz

301-881-9049

www.mysilpada.com/stacy.rabinovitz

Beautiful Gifts for Mother's Day, Graduations & Bridal Party

*LIKE IT? Purchase online or by phone.
LOVE IT? Have a party & get it for FREE!
WANT EXTRA \$\$\$? Talk to me about becoming a rep!*



Rosa's Beauty Salon
For Men & Women
4804 Bolling Brook Parkway, Rockville MD 20852

Rosa San Martin
Hairstylist

Open Tues-Sat
(301) 770-7171
(240) 888-9287
Appointments Only
Previo Cita Necesaria

Shampoo Sets
Haircuts
Highlights
Colors
Perms

Permanent Makeup
Lip Liner, Eyeliner
Eyebrows
Curling Lashes
Wax

Rocking Horse Community Garden Starts a New Season

by Christiana Drapkin

On Saturday afternoon, March 2, about thirty community gardeners crowded into our house here on Ashley Drive for our Rocking Horse Community Garden season kickoff. Although there were snow flurries outside, inside we were sharing seeds and growing tips for the new season.

This will be the third season of the Rocking Horse Community Garden, situated right next to the Rocking Horse Center on Macon Road and Hunters Lane. This and a dozen other community gardens are administered by Montgomery Parks, part of the Maryland-National Capital Park and Planning Commission (M-NCPPC). After the first year, garden plots filled up quickly, giving a new fun and educational experience to some first-time gardeners, and providing experienced gardeners who might not have access to a sunny spot to get their hands dirty again, raising tomatoes, beans, cucumbers, and whatnot.

Our gardeners and their families seem to hail from all over the globe, bringing cultivation expertise from their diverse homelands with them. Last year, we had Mary, originally from Ghana, raising quinoa, which now shows up as the latest-fashion ingredient in some of our fancy restaurants. Ira, who worked on a kibbutz in Israel as a young man, passes on all kinds of efficiency and labor-saving tips. Maro, who has also taken the Master Gardener course program offered by M-NCPPC in conjunction with University of Maryland and Brookside Nature Center, demonstrates a lot of gardening adventures by trial and error, with the requisite sense of humor. Founded in 2008, and modeled after the Master Gardener Program, the Maryland Master Naturalist Program is a statewide, science-based natural resource training course jointly sponsored by University of Maryland Extension, Maryland Department of Natural Resources and other state and local agencies and organizations. Host facilities from around Maryland provide training as outlined in the state guidelines. There is more information on the website at:

<http://montgomeryplanningboard.org/blog-news/2012/12/06/montgomery-parks-seeks-applicants-for-spring-2013-master-naturalist-program/>

Some of our teenagers have raised impressive crops of squash, eggplant and other veggies, while our very youngest gardeners get a big thrill from harvesting fresh strawberries and pulling carrots. Looking back on the last two

years, I must say, the most unexpected harvest from our community garden was the community itself. That's why Nancy Melvin and I are volunteering again this year to be the community garden liaisons, in cooperation with Patricia Lynch, the administrator on staff at Montgomery Parks.

Talking about our past gardening season at the Rocking Horse Community Garden, and welcoming our new gardeners (there is always some turnover of gardeners from year to year), we discussed our plans, hopes and challenges for the new growing season. Pest control is a shared challenge. Cucumber beetles and stinkbugs don't just sit on one ill-maintained plot, but they affect the entire garden before long. Watering, weeding, and cultivating according to organic gardening practices are part of the commitment of the gardening contract for each individual gardener. Asking for help, or offering to help your neighbor, are part of the communal garden experience, if the garden is to thrive. We are also committed -- inspired by the Grow It -- Eat It movement -- to donate extra fruit and vegetables when the bounty of our harvest comes in.

Although this year's garden plots at Rocking Horse and Parklawn and other sites are all filled by now, you might want to find out more about the M-NCPPC naturalist and gardening programs. There is a wealth of information on the Maryland Parks websites, covering sports and activities for the entire family, gardening courses, environmental education and stewardship. Check out: www.MontgomeryParks.org

http://www.montgomeryparks.org/brookside/master_gardener.shtm

<http://mcmg.umd.edu/index.cfm> http://www.montgomeryparks.org/permits/find/community_gardens_program.shtm



Randolph Hills, Randolph Farms, Franklin Park and Montrose Park Market Update...

| <u>Address...</u> | <u>List Price</u> | <u>Sold Price</u> | <u>DOM</u> | <u>Subsidy</u> | <u>Date Settled</u> |
|---------------------|-------------------|-------------------|------------|----------------|---------------------|
| 4701 Coachway Drive | \$385,000 | \$380,000 | 50 | \$9,000 | 12-Oct-12 |
| 11906 Ashley Drive | \$299,900 | \$290,000 | 201 | \$0 | 30-Oct-12 |
| 12128 Gaynor Road | \$439,900 | \$439,900 | 6 | \$5,000 | 01-Nov-12 |
| 4813 Mori Drive | \$424,900 | \$404,000 | 6 | \$1,500 | 05-Nov-12 |
| 12106 Otis Drive | \$300,000 | \$312,500 | 198 | \$0 | 06-Nov-12 |
| 4806 Wyaconda Road | \$374,900 | \$375,000 | 7 | \$2,500 | 08-Nov-12 |
| 11009 Troy Road | \$339,000 | \$327,500 | 12 | \$0 | 12-Nov-12 |
| 11401 Ashley Drive | \$414,900 | \$400,000 | 12 | \$0 | 17-Nov-12 |
| 4813 Wilwyn Way | \$365,000 | \$365,000 | 8 | \$5,000 | 13-Dec-12 |
| 11808 Timber Lane | \$359,900 | \$359,900 | 11 | \$12,500 | 14-Dec-12 |
| 4802 Oxbow Road | \$265,000 | \$270,000 | 5 | \$0 | 21-Dec-12 |
| 4905 Randolph Road | \$389,900 | \$389,000 | 447 | \$0 | 04-Jan-13 |



Spring is here!



If you're thinking of selling or buying a home this year,
call Denise for advice, timing and marketing strategies.
Denise has more than twenty years of experience as a realtor in the area.



Denise
Szczur
301-452-5544



Long and Foster Realtors
6000 Executive Boulevard, North Bethesda, Md 20852
(O) 301-468-0606 (C) 301-452-5544

email: Denise.Szczur@LNF.com

website: DeniseSzczur.LNF.com



"Professional Service with a Personal Touch"